

715 OAK PARK AVE
CORPUS CHRISTI, TEXAS 78408

11202 US HWY. 59 NORTH, STE B
VICTORIA, TEXAS 77905

11837 Fairmont Parkway
LA PORTE, TX 77571



BHP ENGINEERING & CONSTRUCTION, LP

RELEVANT PROJECT EXPERIENCE

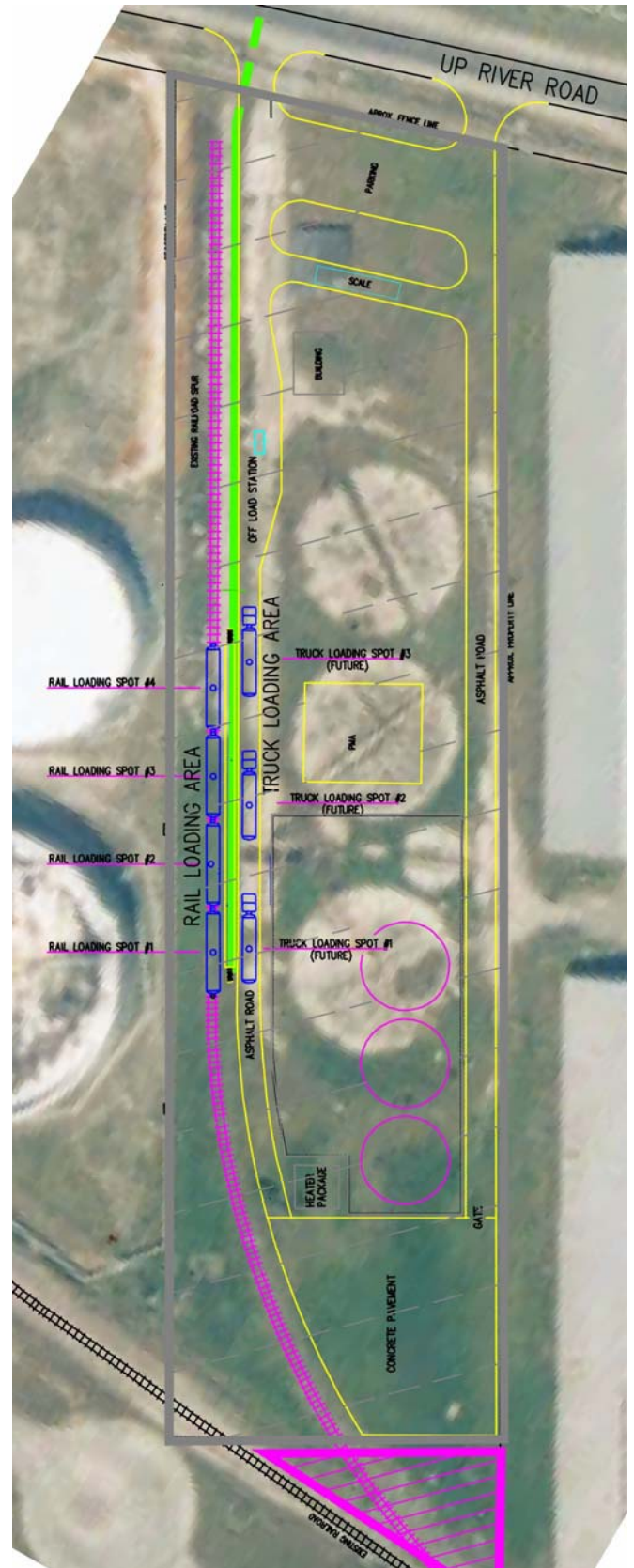
Asphalt Blending/Loading Facilities Trifinery, Corpus Christi, TX - \$3.5 MM

Designed a combination rail and truck loading facility for asphalt and other refined products. The project required underground road crossing, pipe rack, car storage and switching, lighting, metering, fill shutoff, and flush line.

The online Blending System consisted of 3 tanks, direct fired tank heating, pump mixers, the polymer modification addition (PMA) system and polymer storage building.



Asphalt Blending/Loading Facilities Trifinery, Corpus Christi, TX



Asphalt Blending/Loading Koch Refining, Corpus Christi, TX \$15MM

Upgrade Fuel Oil facilities to blend and ship Asphalt by truck, rail and barge. This project included piping, storage and marine facilities.

Latex Asphalt Blending/Loading Coastal, Corpus Christi, TX - \$1.5 MM

Grassroots PMA blending facility including storage, metering, rail and truck loading.

715 OAK PARK AVE
CORPUS CHRISTI, TEXAS 78408

11202 US HWY. 59 NORTH, STE B
VICTORIA, TEXAS 77905

11837 Fairmont Parkway
LA PORTE, TX 77571



BHP ENGINEERING & CONSTRUCTION, LP

Asphalt Tank Heating

Coastal, Corpus Christi, TX - \$2 MM

Retrofitted three asphalt storage tanks with direct fired heaters and larger mixers. Part of the project was bringing utilities to the site.

Asphalt Modernization Project

Trigeant, Corpus Christi, TX \$10 MM

BHP redesigned the asphalt plant to upgrade the unit and remove production constrictions. This increased capacity from 23,000 BPD to 30,000BPD. The project included a revamped pre-flash tower, new internals and top for the vacuum tower, upgrade of the heat exchanger train and Vacuum system, replacement of flare tip and KO Drum, new instrumentation and DCS, new control room and electrical utility additions.

BHP Engineering also provided procurement, scheduling and on-site construction control.



715 OAK PARK AVE
CORPUS CHRISTI, TEXAS 78408

11202 US HWY. 59 NORTH, STE B
VICTORIA, TEXAS 77905

11837 Fairmont Parkway
LA PORTE, TX 77571



BHP ENGINEERING & CONSTRUCTION, LP

**Asphalt Tank Farm Expansion
Trigeant, Corpus Christi, TX - \$8 MM**

Provided engineering and construction management for one 80,000 BBL and two 20,000 BBL asphalt tanks, associated piping, steam heating, ring wall foundations, secondary containment, new area drainage, and electrical system

